

Jumeirah Village Triangle, JVT District 4, Seslia Tower, Dubai

1,225,000 AED

Own this from just 5,041 AED/month

Description

Comfort You Can Feel, Value You Can Trust

There are homes that impress you... and homes that quietly understand you. This one does the latter. At **Seslia Tower**, light fills the space gently, the city feels present but never overwhelming, and every corner invites you to breathe a little easier.

Offered as a **resale at an unbeatable price**, this is more than a smart opportunity. It's a moment that feels right the kind you recognize when you're ready to make a place truly your own.

Floor level: 30th

Floors Count: 36 levels

Size: 64.47 sq.m

Type: Apartment

Details: 1bed, 2baths

MYHOMEX

Emirates Real Estate Keyes

NEARBY PLACES

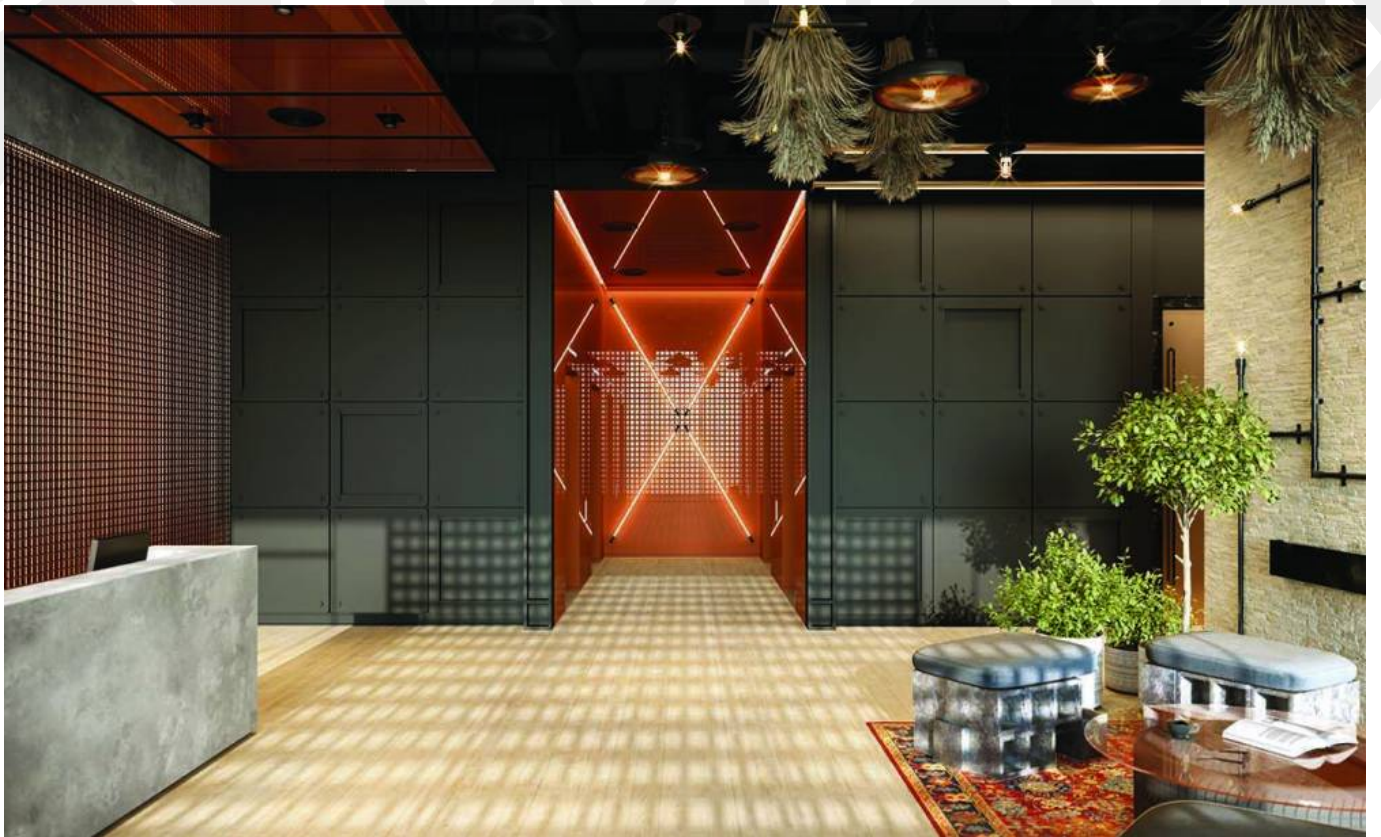
• **15 minutes** to Palm Jumeirah

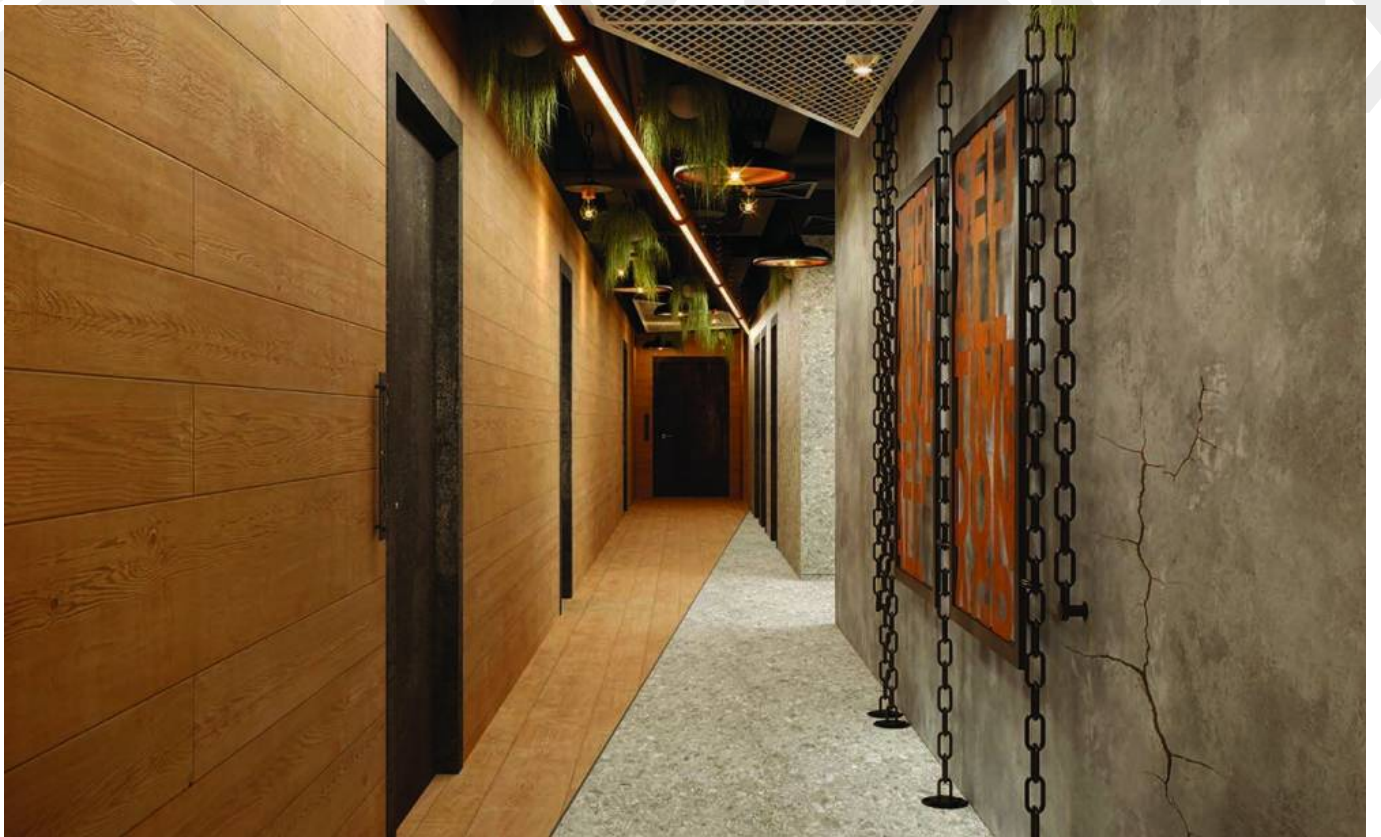
- **15 minutes** to Mall of the Emirates
- **17 minutes** to Global Village
- **20 minutes** to Dubai Mall

Property Images (13)

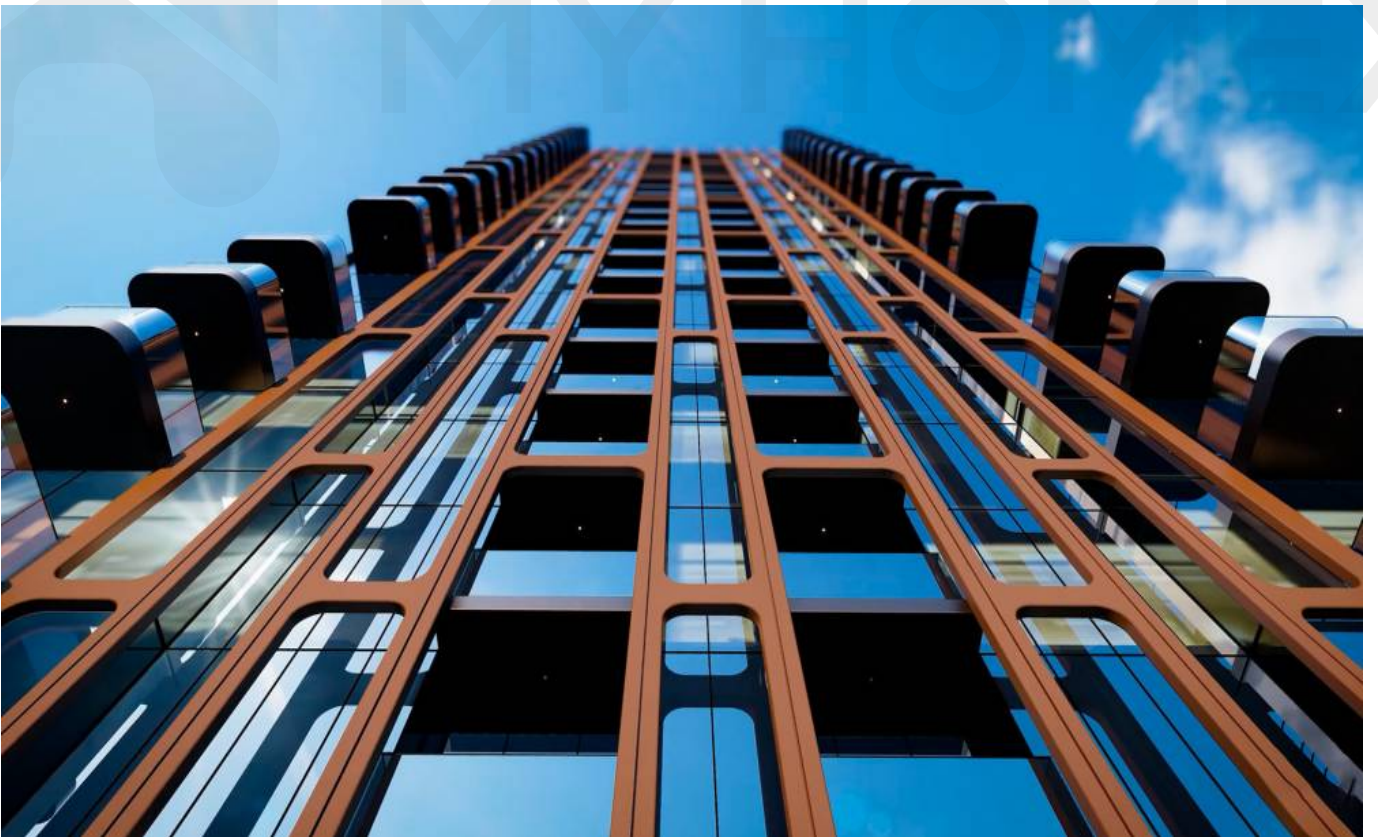


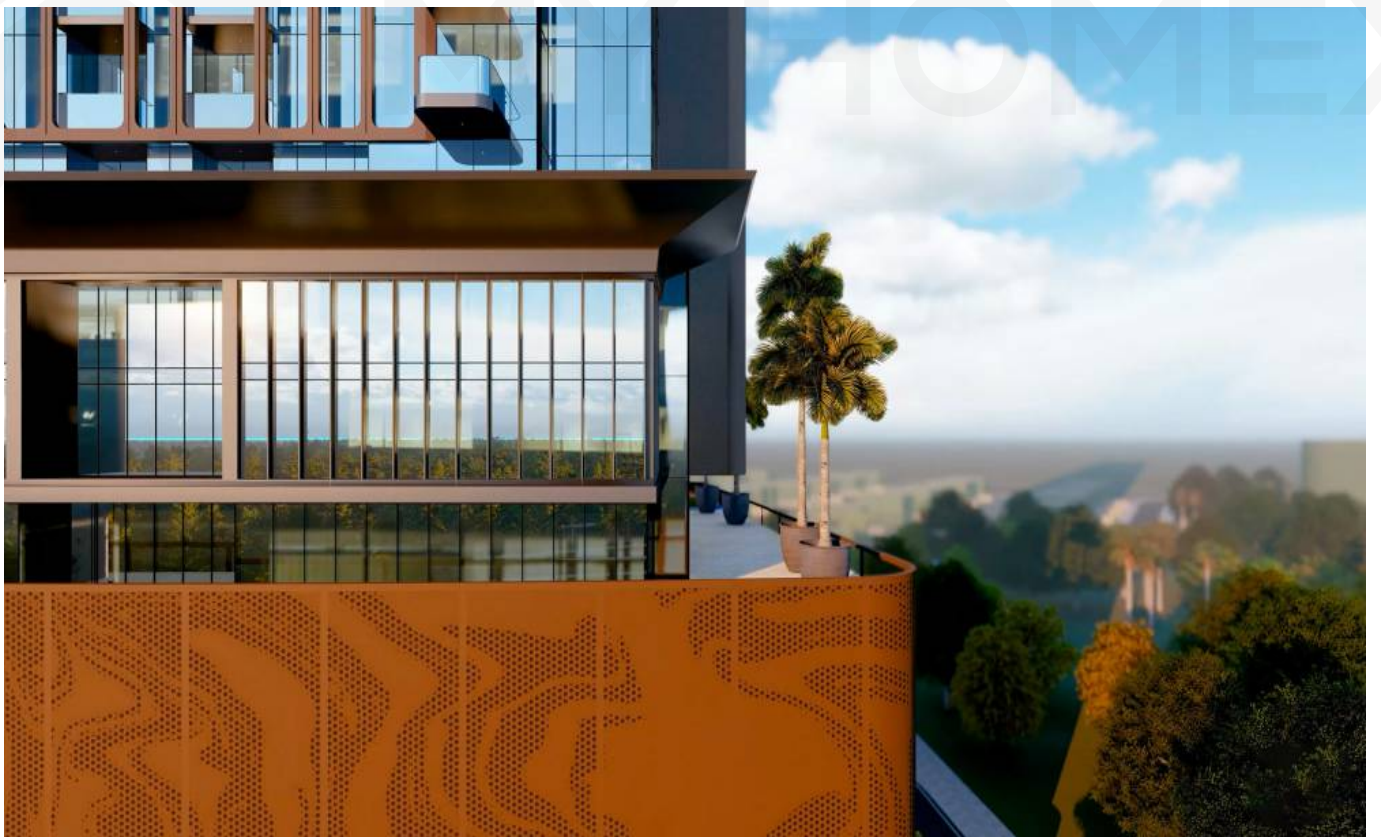












Generated on April 21, 2026 9:48 am

<https://myhomex.ae/property/motivated-seller-high-demanded-location/>

Phone: **+971 58 578 7812**



MY HOMEXTM